

PURCHASE (16) RECEIVE

10% OFF

PURCHASE (32) RECEIVE

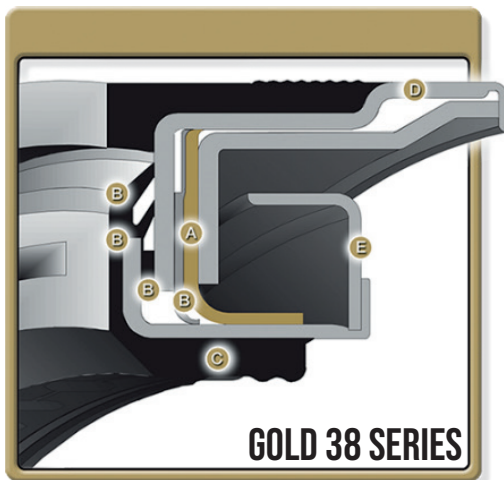
15% OFF



NATIONAL 38 AND 37 SERIES SEALS • CAN MIX AND MATCH

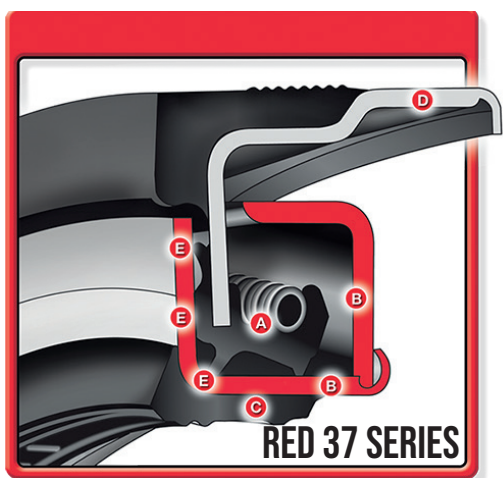
National
Oil Seals

For over 75 years, National has made wheel end seals that work so well you can install them and forget about them. Simple to install, easy to forget. That's National performance.



The Most Technically Advanced Seal in the Market.

- A. Patented PTFE Lay-Down Bi-Directional Sealing Lip maintains constant sealing during wheel movement
- B. Four floating points of contact and bumper pad that inhibits contaminant entry into the hub
- C. SURE-LOCK I.D. rib technology firmly grips shaft and provides superior contaminant exclusion
- D. Metal O.D. maintains position on hub bore
- E. A unitized shield prevents damage to PTFE oil sealing lip and provides structural integrity

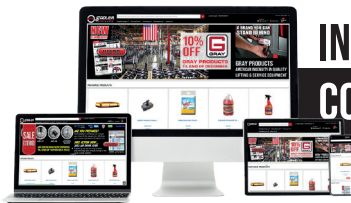


**The Name You Trust.
The Seal You Can Depend On.**

- A. Single spring-loaded sealing lip effectively pumps lubricant back into hub
- B. Unitized construction provides structural integrity and main lip protection
- C. Unique SURE-LOCK I.D. rib technology firmly grips shaft and provides superior contaminant exclusion
- D. Metal O.D. maintains position on hub bore
- E. Three floating points of contact lock out dirt and moisture



PURCHASES MUST BE ON (1) INVOICE AND INVOICED BY 2/28/23 • PURCHASES PRIOR TO 2/1/23 DO NOT APPLY



PURCHASE (16) RECEIVE **10%** OFF

CAN MIX AND MATCH



RevHD is a family-owned company, committed to an "old-school" philosophy of customer service and customer loyalty - standing behind their products completely.

\$32.92 FOR ALL
REV HD WHEEL SEALS

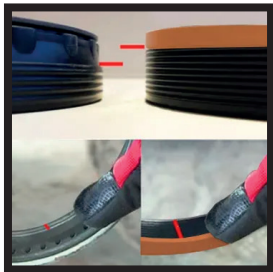
INSTALLATION REQUIRES NO TOOL



Premium wheel seal uses HNBR and comes with a 3-year warranty.

REV MAX WHEEL SEAL

- Can be used with oil or grease
- Free tube of seal bond in every box
- Installed with any flat instrument
- Built for off-road and other Severe Duty applications
- Flex design to help prevent cocked seals
- More internal sealing points
- Top plate protects seal from impact & brake heat
- Seal lips run on a polished surface
- Wider ID & OD for greater contact coverage
- Packaged for longer shelf life



Heavier Construction with Wider O.D. and Wider I.D.

RevHD seals offer a wider O.D. & a wider I.D.; providing more surface contact area to cover both the hub bore and the spindle shoulder. In addition, our seals have more internal sealing points.



Template on Back of the Box

On the back of each seal box is a tool that holds semi-fluid / synthetic grease in place & shows the correct fill level for the hub you are working on.

Seals		REV MAX 3 Year Warranty	STEMCO				SKF / CR				NATIONAL		CONMET	MERITOR
			Voyager	Discover	Grit Guard	GHP	Classico	Plus	Plus XL	LL	Standard	Gold		
Steer	12,000 lbs	RM-S01	383-0136	383-0236	382-8036	308-0836	35066	35059	35058	35103	370001A	380001A	10045885	MER0236
	16,000 lbs + (Mack and others)	RM-S05	383-0164	383-0264	382-8064	308-0864	43764	43763	43761		370048A	380048A	10045883	MER0264
Drive	(Eaton / Meritor)	RM-D02	393-0173	393-0273	392-9131	309-0973	47697 47696	47691 47694	47692 47695	47693	370003A	380003A	10045887	MER0273
	44,000 lbs (Mack and others)	RM-D06	393-0104	393-0204	392-9112	309-0904	42672	42671	42673		370031A	380031A		MER0204
	34,000 - 38,000 lbs (Mack and others)	RM-D07	393-0103	393-0203	392-9094	309-0903	45099	45097	45093		370022A	380022A		MER0203
	34,000 lbs (Eaton, Ford, Navistar, and White)	RM-D08	393-0112	393-0212	392-9099	309-0912	38780	38776	38779	38783	370023A	380023A		MER0212
Trailer	TN Spindle	RM-T03	373-0143	373-0243	372-7097	307-0743	46305	46304	46300	46308	370025A	380025A	10045888	MER0243
	TP Spindle	RM-T04	373-0123	373-0223	372-7099	307-0723	42623	42622	42627	42631	370065A	380065A	10045889	MER0223
	19,000 lbs (Dana and others)	RM-T09	373-0113	373-0213	372-7098	307-0713	40136	40129	40133		370036A	380036A		MER0213

PURCHASES MUST BE ON (1) INVOICE AND INVOICED BY 2/28/23 - PURCHASES PRIOR TO 2/1/23 DO NOT APPLY